



GPI Design | GPI International
Company Profile + Overview



Embody your design with a signature piece.

GPI Design marries proprietary backlighting technologies with unique translucent surfaces to create distinct features that transcend the ordinary.

Backlit translucent surfaces form striking visual elements for interior feature walls, columns, bars, reception desks, floors, and ceilings. From design and engineering through fabrication and installation, GPI synchronizes all of the elements that comprise your memorable statement: backlit onyx panels, innovative translucent surfaces, LED backlighting, lighting controls and custom structural systems. Our turnkey integrated process ensures fluidity in bringing your design concepts to life.

Define your space with an exceptional work of art.



About GPI Design | “Integrated Surfaces + Light”



integrated
surfaces + light

Create an extraordinary work of art with our expertise and our advanced technology.

You're the artist, we're the brush; commercial interiors are our canvas.

GPI Design works with architects, interior designers and lighting designers to create custom illuminated features for commercial interiors. With your vision as the driving force, our team crafts custom systems to merge translucent surfaces, lighting, and structural elements.

Our team consists of designers and engineers with backgrounds in architectural surfaces, lighting design, and structural engineering. From concept through installation, you'll find that we operate with principal-level involvement, attention to detail, and a collaborative spirit that cultivates creativity.



About GPI Design | “Integrated Surfaces + Light”

Resourceful

We enjoy becoming involved early in the design process to infuse your designs with unique material selections and innovative engineering methods.

Streamlined

Allowing us to integrate all the various elements that compose your memorable design statement provides you more time for other deadlines.

Detailed

Our integrated engineering and manufacturing process controls joints, seams, trims and decorative finishes down to the millimeter. We obsess over the details so you don't have to.

Accountable

Our turnkey approach allows us to take full responsibility for the details from start to finish - we design, we engineer, we fabricate and we can even install.

Meet Our Team

Scan with Smart Phone to launch the GPI Design video:





GPI Design Company History



Thomas Lawrence, Founder + President
tom@gpidesign.com

Thomas Lawrence founded GPI's predecessor, Gripco Products, Inc., in 1994. Originally specializing in natural stone supply, our philosophy emphasizing a **turnkey approach** quickly led to the on-site installation of large commercial stone pieces. With these experiences and subsequent observations we developed larger, thinner, exotic stone panels that increased both ease of installation and design possibilities.

Recognizing the attractive way light penetrated these materials and access to semi-precious rock quarries throughout the world inspired us to design a proprietary LED backlighting technology and begin laminating glass to our stones, allowing for better translucency besides granting more strength and stability. Our **incorporation of design and engineering capabilities** prompted a re-branding to GPI Design, through which we have developed a unique market niche: delivering integrated backlighting solutions for all types of translucent architectural surfaces.

By developing into a **creative hub for integrated interior lighting features**, GPI collaborates with world-renowned architecture, interior design, and lighting design firms. GPI's distinctive integration of surface, structural, lighting, electrical, and installation services truly breaks the mold. With offices spanning the globe in London, Cleveland, Hong Kong, and Dubai, the world's most creative minds come to us with ideas and we transform the concept into reality.

Founder and Director Thomas Lawrence still actively participates in the entire process—whether design consulting in architects' war rooms, selecting custom stones knee-deep in remote quarries, or even wielding hammers on construction installations.



Selected Project List



National Cancer Institute
Washington, D.C.

Architect: HOK
General Contractor: James G. Davis Construction Corporation
Volume: 3,200 SF
Total project value (USD): \$200 million

Soldier Field
Chicago, IL

Architect: Holabird & Roche
General Contractor: Turner/Barton Malow
Volume: 175,000 SF
Total project value (USD): \$632 million

Masdar City
Abu Dhabi, UAE

Architect: Foster + Partners
General Contractors: Taahud/Amana Walbridge
Volume: 11,000 SF
Total project value (USD): \$22 billion

Custom Dining Table
Riyadh, Saudi Arabia

Architect: Darrell Schmidt Design Associates
Volume: Confidential
Total project value (USD): Confidential



Selected Project List



Grand Hyatt San Francisco
San Francisco, CA

Architect: Gensler
General Contractor: Howard S. Wright
Volume: 5,120 SF
Total project value (USD): \$70 million



Bellagio Hotel & Casino
Las Vegas, NV

Architect: Pollack Architecture
General Contractor: Cosmopolitan Stone
Volume: 13,000 SF
Total project value (USD): \$1.6 billion

Signature Place
St. Petersburg, FL

Architect: Perkins + Will
General Contractor: Bovis Lend Lease
Volume: 900 SF
Total project value (USD): \$113.5 million

Dallas Convention Center Hotel
Dallas, TX

Architect: BOKA Powell
Contractor: Balfour Beatty
Volume: 1,400 SF
Total project value (USD): \$824 million



Selected Project List



Wells Fargo Center
Norfolk, VA
Architect:
General Contractor:
Volume:
Total project value (USD):

Davis Carter Scott Design
Clancy & Theys
1,000 SF
\$170.9 million



Compuware World Headquarters
Detroit, MI
Architect:
General Contractor:
Volume:
Total project value (USD):

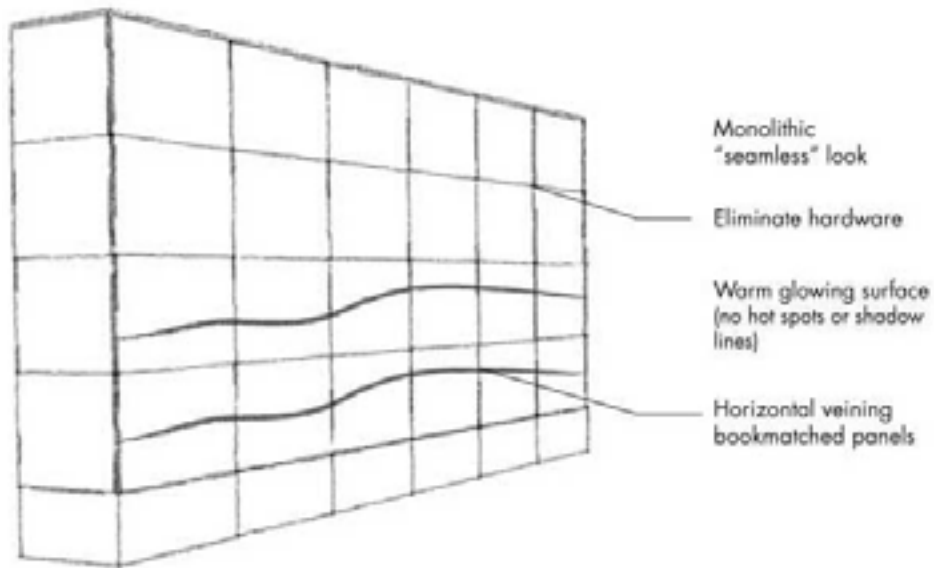
Rossetti Associates
Anderson
350,000 SF
\$350 million

2000 Tower Oaks Blvd.
Rockville, MD
Architect:
General Contractor:
Volume:
Total project value (USD):

KGD
Whiting-Turner
2,000 SF
\$80 million

Carl B. Stokes Federal Courthouse
Cleveland, OH
Architect :
General Contractor:
Volume:
Total project value (USD):

Kallman McKinnell and Wood
General Services Administration
260,000 SF
\$200 million



PROCESS OVERVIEW

For backlit features, we are your single source for streamlined integration; eliminating errors, keeping clients on schedule and in budget from concept through installation.

- Maintaining design intent from concept to construction
- Engineering custom structural systems per project
- Coordination of shop drawings, submittals, and revisions
- Ensuring quality control through manufacturing and installation
- Delivering sophisticated and detailed lighting features



PROCESS STEP 1 – STRUCTURE

Our systems eliminate shadows and cold spots.

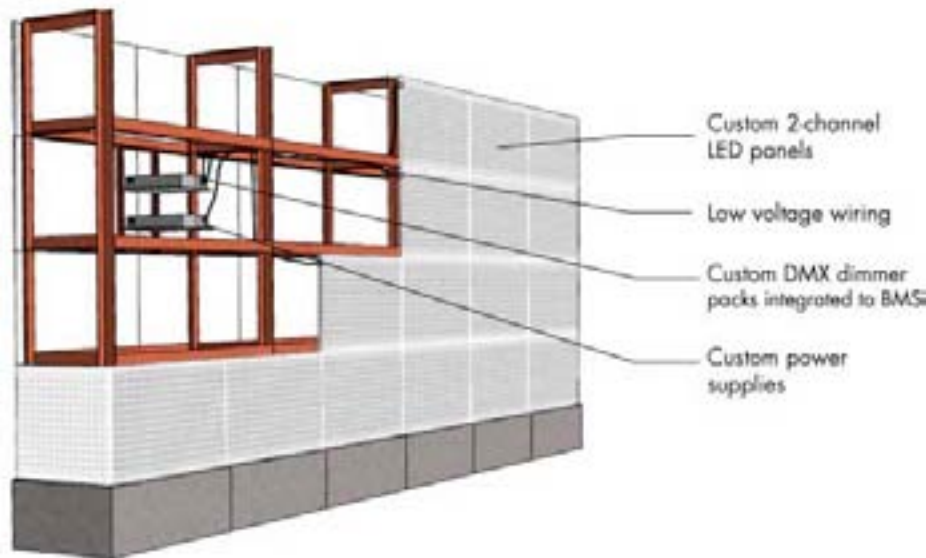
Transparent materials demand careful consideration when engineering the structural support systems as these steel elements can often create unwanted shadow lines and cold spots throughout the surface. All of our structural systems are designed per project by our in-house engineering team. The custom structural systems are fabricated with meticulous attention to detail.

Custom structural systems:

- structural steel
- fasteners/supports
- extruded aluminum
- z clips
- wood framing
- suspended systems
- decorative metalwork and finish trims

PROCESS STEP 2 - LIGHTING

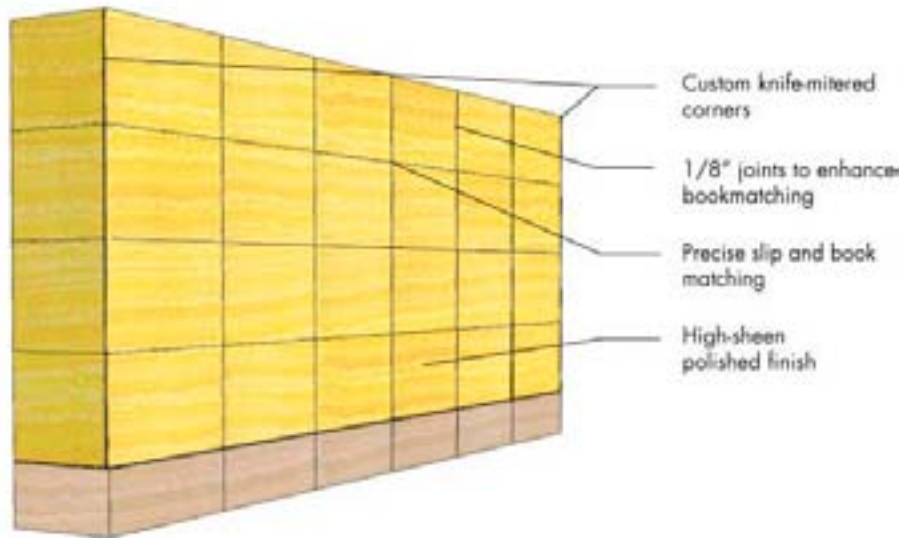
Choosing flat LED panels is only the start.



We are keenly aware of how lighting affects your design surface. Our Infuse™ Flat-Lite™ LED panels are placed directly behind the decorative surface, but more importantly, they are installed in front of the structural steel - resulting in a solid wall of uninterrupted light without any interference from structural elements. In addition, our team of designers will assess the potential need for filters, diffusers, seam treatments, and reflective elements to optimize the continuity of lighting.

From BMS integration to amperage distribution calculations, the electrical systems that drive the LEDs are custom designed and engineered per project, typically to allow full control and integration with the building's central lighting management system.

- Custom lighting controls - power supplies and dimmers fabricated to exact specifications per project
- Building management system integration
- Diffusers, scrims, and color filters to enhance light
- Consideration of lighting in conjunction with structural elements



PROCESS STEP 3 - SURFACE

The surface is the face of your project, but it's a work of art, inside and out.

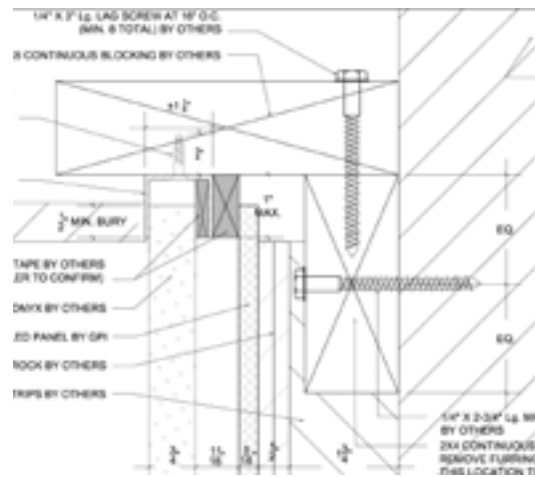
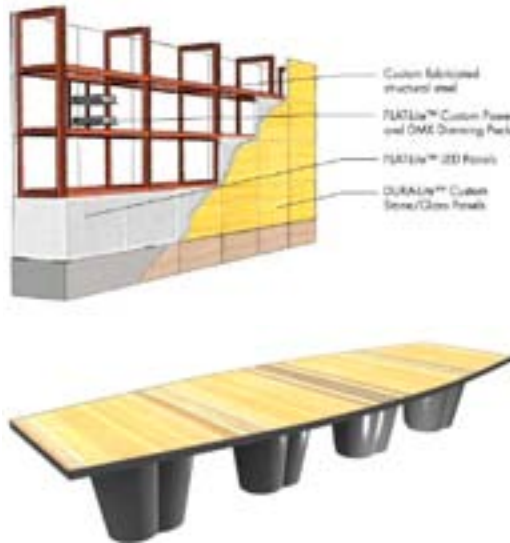
The translucent surface, the integral finish face of your project, will interact with both the interior space and its occupants. To be harmonious, the details need to be impeccable. Attention to detail means not only careful consideration of the structure and lighting elements behind the surface, but the finish joints and trims that visually unite your distinctive composition. Tight quality control standards maximize the dramatic movement of natural stone surfaces and ensure that the steel and lighting elements fuse harmoniously.

- Precision-mitered corners
- Precise slip and bookmatching
- Tight joint lines through engineering and installation
- Color consistency through design and sourcing
- Polish/finish through manufacturing and installation
- Experience with quality and consistency control of large volumes of material



DESIGN CAPABILITIES

Our in-house design team consists of designers and engineers with backgrounds in architectural surfaces, lighting design, interior design, and structural engineering. From concept through installation, you'll find that we operate with principal-level involvement, attention to detail, and a collaborative spirit that cultivates creativity.



Computer Programs and Resources:

Rhino 3D

- Owner visualization of conceptual designs
- Stone layouts and bookmatching diagrams
- Finish selection and comparisons

Plug-ins

- V Ray
- Flamingo
- Grasshopper

AutoDesk REVIT Architecture

- Merging technical details with conceptual visualizations
- Demonstrate layers of complex systems
- Communication of general scale + layouts

AutoDesk AutoCAD 2012

- Detailing and final submittals of full shop drawings
- Stamped structural engineering drawings
- Systematic details of surface, structure, and lighting components

Adobe Creative Suite 5.5

- Photoshop CS5
- InDesign CS5.5
- Illustrator CS5
- Dreamweaver CS5.5



Selected Client List

Ayers/Saint/Gross
BBG-BBGM
Behnisch Architekten
BOKA Powell
Boora Architects
Bostwick Design Partnership
Cleo Design
Cleveland Marble Mosaic
CMMI
Cooper Carry
Darrell Schmitt Design Associates
David Collins Studio
Davis Carter Scott Design
D. Crosby Ross Inc.
Flick Mars

Forrest Perkins
Foster + Partners
Friedmutter Group
FXFOWLE
Gensler
HOK
Illuminating Concepts
Indidesign
Jonathan Nehmer + Associates
KGM Architectural Lighting
Kishimoto Gordon Dalaya
Klipp Architects
KMD Architects
Lang Lighting Design
Leo A. Daly

MCLA
Orlando Diaz-Azcuy Design Associates
Palindrome Lighting Design
Perkins + Will
POLLACK Architecture/RAPT Studio
Revolver Design
RTKL
Schwinghammer Lighting
Shop 12 Design
SOM
Steelman Partners
Studio 27 Architecture
The Switzer Group
Waldrop + Nichols Studio
Wilson Associates
Zimmer Gunsul Frasca Architects



Partnerships



Located at the core of Ohio's Amish country in the city of Dover, **Marlite** has eight decades of expertise with the precise fabrication of framing and finishes for

custom wall systems. GPI Design offers our WAFER-Stone™ lightweight stone panels and Infuse™ Flat-Lite™ LED backlighting as part of Marlite's pre-fabricated wall systems, Myriad™ and Surface Systems™.

These new finish options will allow Marlite to provide even more finish options to the already nearly limitless possibilities for their Myriad Wall System™. A proprietary system consisting of pre-manufactured panels that snap in to a custom-built, lightweight aluminum framework, the Myriad Wall System™ exemplifies simplicity, durability, and attractiveness. This allows for ease in construction with minimal tools and the ability to change and swap numerous and striking panels at a whim. While GPI's custom control over the whole process makes for a quality and creative product, the strategic alliance with Marlite allows more people the opportunity to experience our innovative products and designs in a cost-effective manner while still being assured that exacting specifications are met.



Recognizing a natural synergy between lighting effects and underwater imagery, GPI Design

has formed a creative partnership with **Voices of the Earth, LLC**. Robin Bush, founder and principal of Voices of the Earth and her team of fine art photographers capture close-up moments of underwater life and render them in vibrant and inspiring compositions. GPI Design, industry experts in the fabrication and engineering of innovative backlit features, has been selected by Voices of the Earth to provide LED backlighting and structural design in the illumination of Voices of the Earth images.

GPI will also be using backlit natural stone finishes to complement the striking Voices of the Earth imagery. This reveals new opportunities for designers in the healthcare, corporate, spa and hospitality industries to create warm and inviting experiences that welcome and engage visitors. When translated into wall panels, ceilings, water features, or artistic murals, these alluring underwater images, paired with natural stone, breathe life into interior space in a unique and authentic manner. By bringing nature indoors, we inspire a sense of wonder and connection to the natural world.



Green Power Interiors operates as a subsidiary of **The Green Power Company** which is based in the industrial heart of Kuwait and brings over forty years of knowledge and experience to interior design supply and installation services in the Middle East. Their satellite offices in the United Arab Emirates and Qatar combined with planned expansions to Saudi Arabia, Egypt, Oman, and Lebanon, allow Green Power Interiors the ability to

undertake any project in any region of the Middle East in a hands-on manner. GPI Design, experts in the design, engineering, fabrication, and installation of made-to-order backlit features for the commercial design community, will supply and coordinate with Green Power Interiors to bring inventive, contemporary surfaces to the retail spaces, hotels, and buildings throughout this vibrant region.



With the desire to better serve our ever-increasing network of designers working throughout the Middle East, GPI Design/GPI International eagerly announces a partnership with **Taahud General Contracting Company** based in Abu Dhabi, UAE. With a strong commitment to quality and sustainability, the team at Taahud provides logistics coordination and installation services for GPI Design's large commercial projects throughout the Middle East. As an extension to the core team at GPI Design, the talented and experienced team at Taahud is adept at managing, executing, and installing our larger and more complex features. Attention to detail and commitment to quality through the process of final installation ensures the fluid realization of the initial concept - an owner's ultimate satisfaction. Taahud has international installation and procurement capabilities. Current project locations include: Lebanon, Sierra Leone, Chad, and the UAE.



[Click here to meet our team.](#)



integrated
surfaces + light