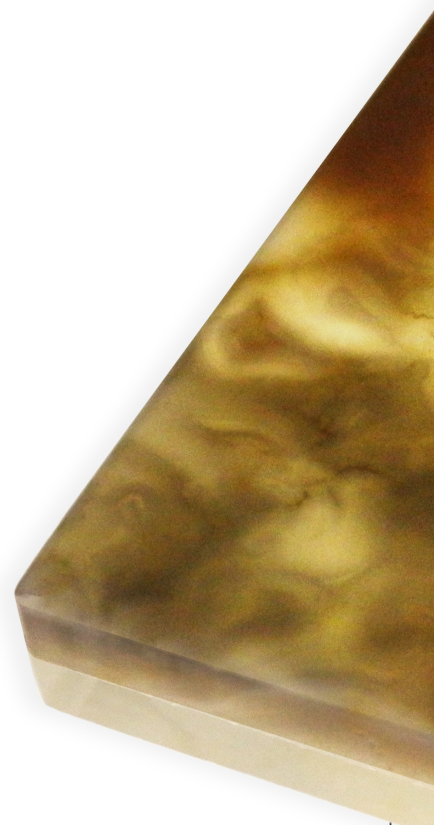
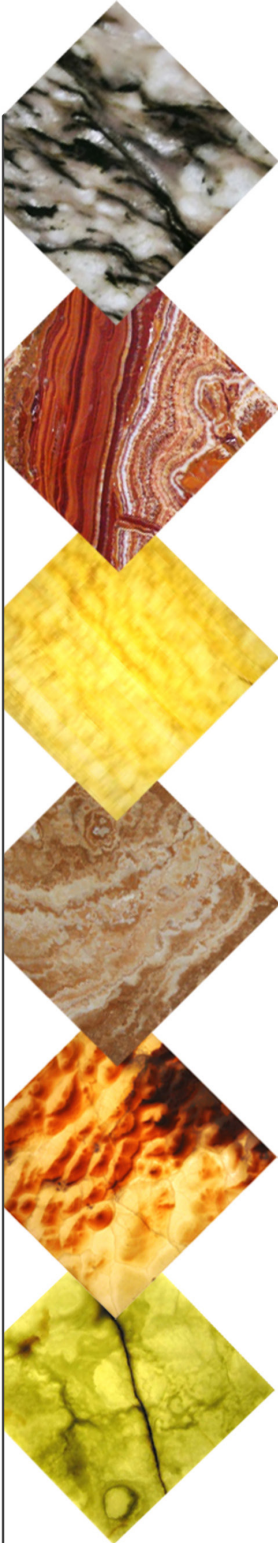




## DURA-lite™ Glass-Backed Natural Stone

In the past, only a few stones could adequately transmit light. By laminating stone to a rigid clear backing, your palette of translucent stones is now endless. Large panels allow the authentic beauty of stone to stand uninterrupted, making it possible to achieve seamless, monolithic walls.

With classic character that evokes nostalgia and timelessness, stone possesses unique movement and graining that adds texture and depth to any space. Translucent stone is perfect for applications when you need a memorable design statement with a modern interpretation of a classic, reliable material.





## DURA-lite™ Glass-Backed Natural Stone

Using state of the art manufacturing processes, DURA-Lite™ translucent glass-backed natural stone panels are a thin layer of natural stone laminated to a glass substrate, allowing light transmission. Extracted directly from stone quarries, the stone is custom chosen for each project.

Custom choices of endless varieties of stone  
Available in onyx, alabaster, marble, travertine and granite  
-Varying colors and characteristics within all above types  
Precise bookmatching  
Custom thickness and size per project  
Knife miter or quirk miter corners

### thin: transmit light

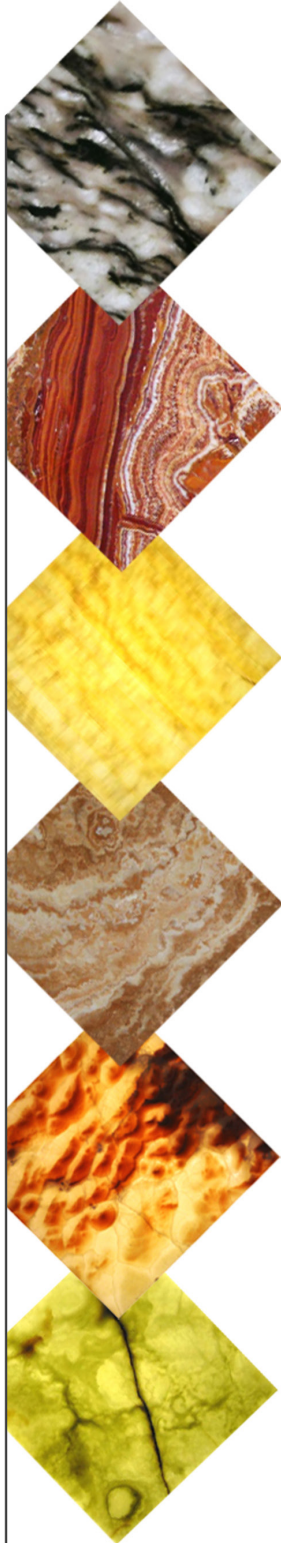
Laminated with permanent bond between stone and glass/acrylic backing  
Overall thicknesses ranges from 5mm to 2 inches  
Stone layer as thin as 1 mm  
Thin stone allows for more translucency  
Minimizes hot & cold spots as compared to dimensional stone

### large panels: minimize seams

Large panel sizes (depending on stone selection)  
Cleaner finished look  
Less seams / grout lines  
Less structural elements needed  
Eliminate shadow lines  
Better book-matched panels

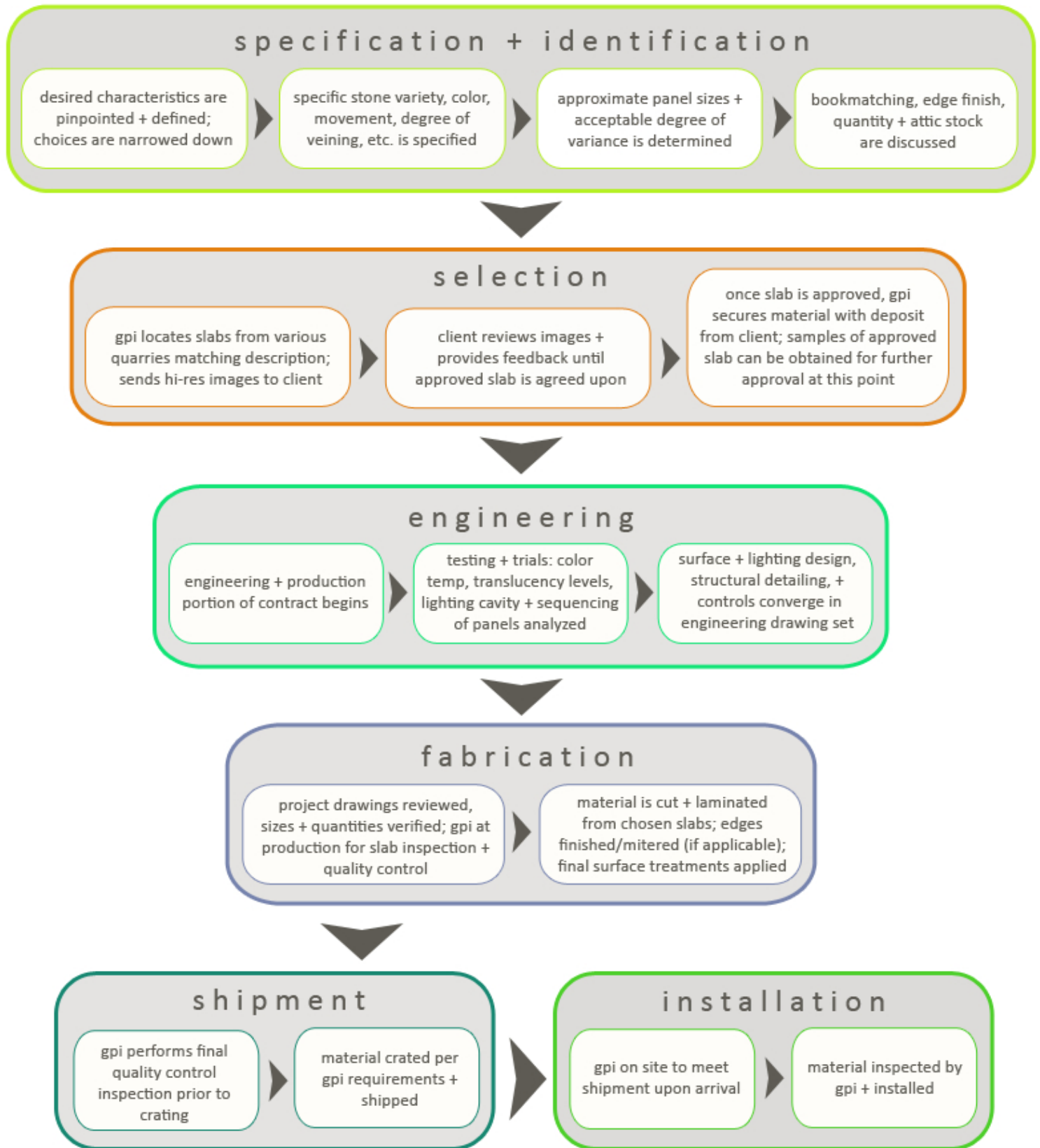
### lightweight: reduce structure and install

1/3rd the weight of dimensional stone  
3 times as strong as same thickness dimensional stone  
Less structural elements needed  
Less weight = less costly shipping  
Less weight = less costly installations  
Faster installation times



# stone selection process: overview

## DURA-lite™ Glass-Backed Natural Stone





# stone selection process: step 1 [pinpoint desired characteristics]

## DURA-lite™ Glass-Backed Natural Stone

MATERIAL

Application: \_\_\_\_\_

Estimated panel size(s): \_\_\_\_\_

Estimated overall square footage: \_\_\_\_\_

COLORATION

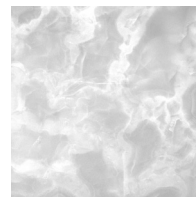
Describe the colors, shades, and ranges desired for your surface (example: dominant color is milky white, highlights of gold, avoid green).

Veining and movement images are shown for GENERAL CHARACTERISTICS ONLY.

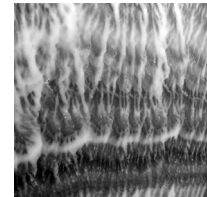
These images are used to gauge design intent. Stone is custom sourced per project and slab(s) are evaluated via full scale photographs for final selection.



Sharp

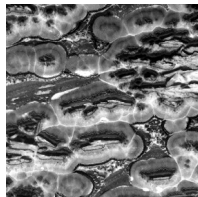


Soft

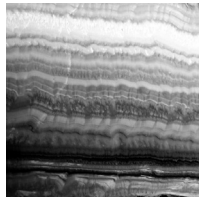


Weep

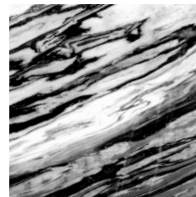
VEINING + MOVEMENT



Section



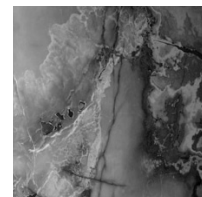
Linear



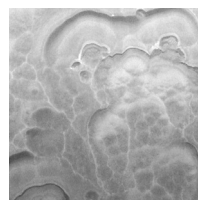
Brush



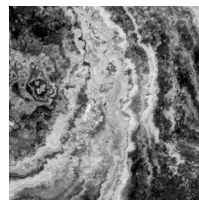
Clean



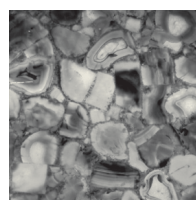
Dense



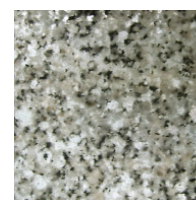
Cloud



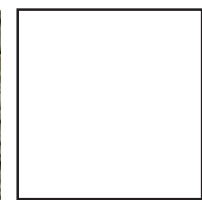
Swept



Agglo

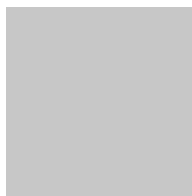


Grain

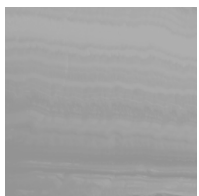


Other

CONTRAST



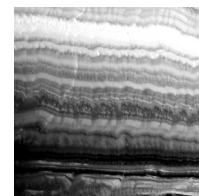
None



Low



Medium



High





# DURA-lite™ Glass-Backed Natural Stone

Project Name: Designer:		Area of Use:
Description: Semi-precious cryptocrystalline quartz Chemical composition: Chalcedonic Silica (SiO <sub>2</sub> ) Hardness (Mohs Scale): 7 (Typ.) Specific Gravity: 2.65 - 2.677 (Typ.) Refractive Index: 1.543 - 1.522 to 1.545 to 1.554 (Typ.) Optical Character: Uniaxial  Stone Thickness: 1 mm to 12 mm (Typ.) Glass Descriptoin: Varies Interlayer: PVB (Typ.) Transmitted UV Blocking: 99% Weight per mm thickness: ~.55 lbs/sq. ft. per 1 mm thickness (Typ.)	<p>1 mm - 12 mm natural stone</p> <p>4 mm - 20 mm glass backing (glass type varies per application)</p>	

(Specifier: please fill in red boxes below.)

Manufacturer: GPI Design/GPI International (www.gpidesign.com)

Product Name: DURA-Lite™ Translucent Glass-Backed Natural Stone Panels

Description: DURA-Lite™ translucent glass-backed natural stone panels are a natural stone veneer laminated to a glass substrate, allowing light transmission. Stone selection, stone thickness, and glass type/thickness are custom per application.

Manufacturer to provide shop drawings for approval by designer prior to fabrication.

**DURA-LITE** -  -  -  -

Model                      Panel Sizes  
(if available, or forward drawings)\*

Qty. of Panels                      Application                      Stone Type

Additional Customization:

QUIRK EDGE MITER

KNIFE EDGE MITER

RADIUS PIECES

CUTOUTS

FINISHED EDGES

INT W = Interior wall

INT C = Interior Ceiling

INT F = Interior Floor

INT S = Interior Sculpture

EXT V = Exterior Vertical Surface

EXT H = Exterior Horizontal Surface

Description/name:

\*Forward image of stone and full set of dimensioned drawings, including plans, elevations and details for GPI to provide pricing.